



Eucalyptus victrix

Native to Australia
Tree to 25 ft. tall
Full sun
Hardy to 18° F



Puya laxa x coerulea

Hybrid with South American parentage
Clump of silvery rosettes to 3½ ft. tall
Full sun to partial shade
Hardy to low 20's F



***Aloe kedongensis* hybrid**

Hybrid; parents from East Africa
Shrub to 4 ft. tall
Full sun to partial shade
Hardy to mid-20's F



***Opuntia ficus-indica* (fruit)**

Prickly Pear
Native to Mexico
Shrub to 10-12 ft.
Full sun
Hardy to upper teens



Ceiba speciosa

(*Chorisia speciosa*)
Silk-floss tree
Native to South America
Tree to 50 ft.
Full sun
Hardy to low 20's F



Baileya multiradiata

Native to SW U.S.A. & Mexico
Perennial to 2ft. tall
Full sun
Hardy to 10° F



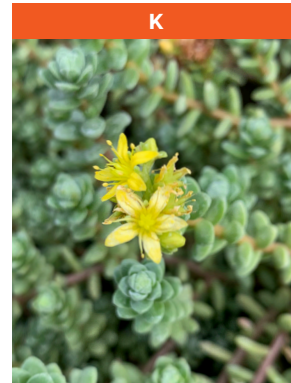
***Echeveria peacockii* hybrid**

Hybrid; parents native to Mexico
Stemless rosettes to 3 – 4" Ø
Partial shade
Hardy to upper 20's F



Russelia equisetiformis

(Coral Fountain)
Native to Mexico
Shrub to 4-5 ft.
Full sun to partial shade
Hardy to 25° F



Sedum oaxacanum

Native to Mexico
Mat-forming, to 5 in. tall
Full sun to partial shade
Hardy to low 20's F



Agave microceps

Native to western Mexico
Clumping; stemless rosettes to 14 in. Ø
Full sun to partial shade
Hardy to 26° F



***Penstemon baccharifolius* 'Diablo'**

Native to Texas
Perennial to 2 ft. tall
Full sun to partial shade
Hardy to 0° F



***Gasteria* 'Monroe's Silver'**

Hybrid with South African parentage
Stemless fan of 8 inch leaves
Partial shade
Hardy to upper 20's F



Aloe karasbergensis

Native to South Africa & Namibia
Stemless rosette to 2 ft. Ø
Full sun
Hardy to 27° F



***Opuntia robusta* (fruit)**

Native to Mexico
Large prickly-pear to 12' tall
Full sun
Hardy to teens F



Aloe pulcherrima

Native to Ethiopia
Stemless rosette to 4 ft. Ø
Full sun to part shade
Hardy to upper 20's F



P



Aloe cooperi

Native to eastern South Africa

Clump or erect narrow leaves to 4 ft. tall

Full sun to partial shade
Hardy to 25° F

S



Aloe labworana x hildebrandtii

Hybrid; parents from Uganda & Somalia

Clumping; rosettes to 3 ft. Ø
Full sun to partial shade
Hardy to 30° F

BK HYBRID

Q



Xanthorrhoea quadrangulata

Native to South Australia

Grass-like heads of leaves to 4 ft. Ø

Full sun to partial shade
Hardy to 20° F

T



Aloe secundiflora

Native to East Africa

Rosettes to 3 ft. Ø

Full sun to partial shade
Hardy to 30° F

R



Brunsvigia josephinae

Native to South Africa

Large bulb

Full sun

Hardy to low 20's

U

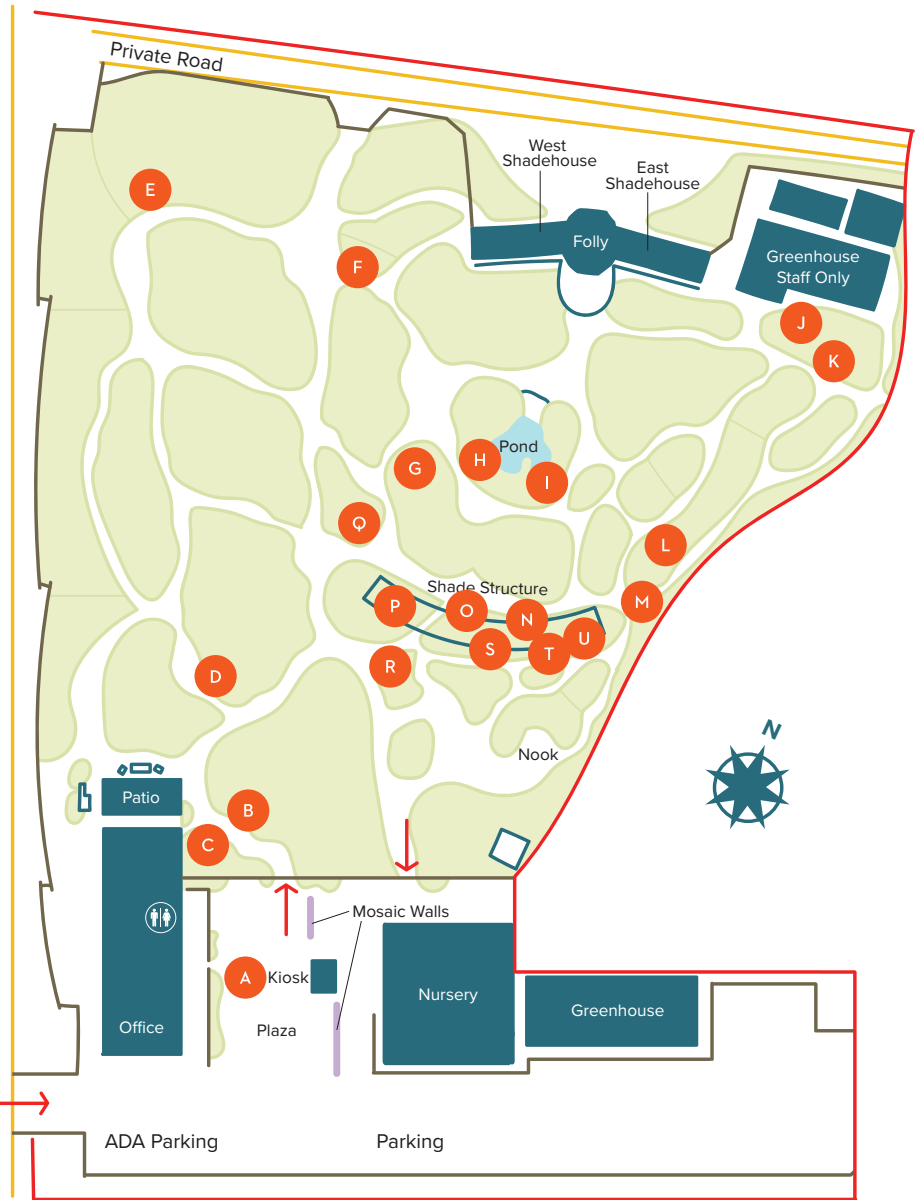


Agave isthmensis

Native to southern Mexico

Rosettes to 1½ ft. Ø

Full sun to partial shade
Hardy to upper 20's F



Scan the code to learn how you can support the Garden with a membership.



WHAT'S IN BLOOM
Information Key



This plant or a similar variety is available for purchase in the Nursery.



This plant was hybridized by Brian Kemble (Curator).



Indicates diameter.