



A



***Trichostema 'Midnight Magic'***

Hybrid; parents from CA & Mexico  
Shrub to 4 ft. tall  
Full sun to light shade  
Hardy to 25° F

D



***Gasteria excelsa***

Native to South Africa  
Single stemless rosette to 2½ ft. Ø  
Shade to part sun  
Hardy to mid-20's F

G



**\*Mangave 'Blue Fountain'**

Hybrid with Mexican parentage  
Stemless rosette to 3½ ft. Ø  
Full sun to partial shade  
Hardy to mid 20's F

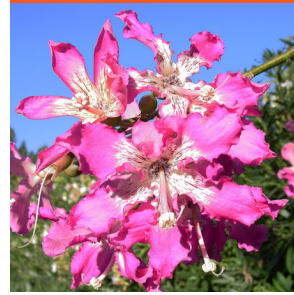
J



***Agave striata***

Native to Mexico  
Clumping, with heads to 2 ft. Ø  
Full sun to partial shade  
Hardy to 20° F

M



***Ceiba speciosa***

(*Chorisia speciosa*)  
Silk-floss tree  
Native to South America  
Tree to 50 ft.  
Full sun  
Hardy to low 20's

B



***Calliandra 'Sierra Star'***

Hybrid; parents native to SW USA & Mexico  
Small shrub 4 ft. tall  
Full sun  
Hardy to 15° F

E



***Aloe reitzii***

Native to northeastern South Africa  
Stemless single rosettes to 4 ft. Ø  
Full sun to partial shade  
Hardy to mid-20's F

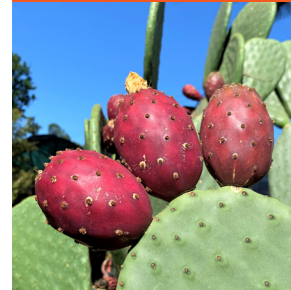
H



***Aloe karasbergensis***

Native to South Africa & Namibia  
Stemless rosette to 2 ft. Ø  
Full sun  
Hardy to 27° F

K



***Opuntia ficus-indica (fruit)***

Prickly Pear  
Native to Mexico  
Shrub to 10-12 ft.  
Full sun  
Hardy to upper teens

N



***Echeveria 'Mauna Loa'***

Hybrid; parents from Mexico  
Single-headed, to 1½ ft. Ø  
Light shade  
Hardy to upper 20's

C



***Justicia californica 'Tecate Gold'***

CA & AZ native  
Shrub to 5 ft.  
Full sun  
Hardy to low 20's F

F



***Puya ferruginea***

Native to the Peruvian highlands  
Clumping; stemless rosette to 1½ ft. Ø  
Full sun  
Hardy to upper 20's F

I



***Erythrina x bidwillii***

Hybrid (1 parent S. American, 1 N. American)  
Deciduous shrub to 8 ft. tall  
Full sun  
Hardy to 20° F

L



***Ferocactus pottsii (fruit)***

Native to northern Mexico  
Barrel cactus, to 1½ ft. Ø  
Full sun  
Hardy to low 20's F

O



***Cyphostemma juttiae (poisonous fruit)***

Native to Namibia  
Thick-stem shrub to 4-6 ft. tall  
Full sun to partial shade  
Hardy to 25°





P



*Echeveria gigantea*

Native to Mexico  
Stem-forming, single; to 2 ft. tall  
Partial shade  
Hardy to upper 20's

S



*Aloe labworana x hildebrandtii*

Hybrid; parents from Uganda & Somalia  
Clumping; rosettes to 3 ft. Ø  
Full sun to partial shade  
Hardy to 30° F

Q



*Aloe pulcherrima*

Native to Ethiopia  
Stemless rosettes to 4 ft. Ø  
Full sun to part shade  
Hardy to upper 20's F

T



*Eucalyptus erythrocorys*

Native to Western Australia  
Tree to 30 ft.  
Full sun  
Hardy to low 20's

R



*Aloe cooperi*

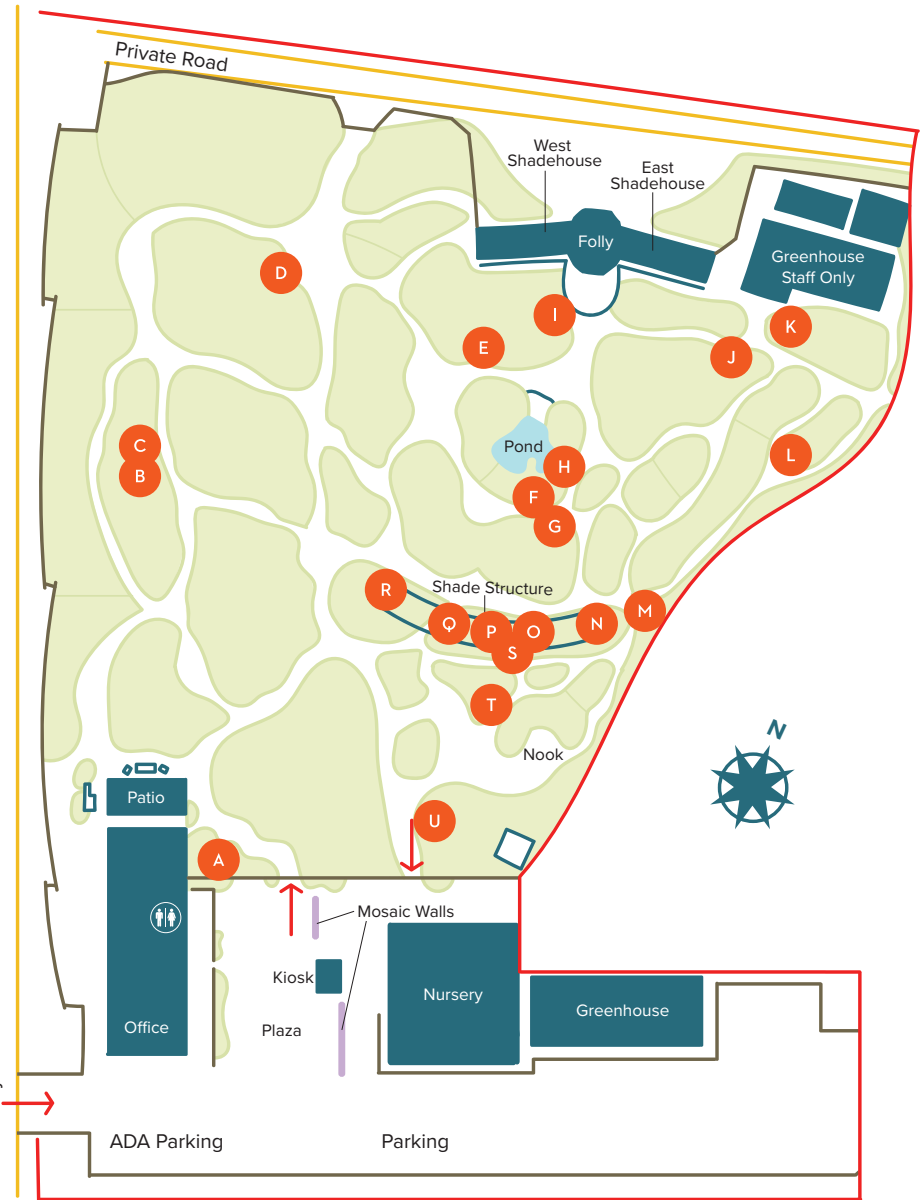
Native to eastern South Africa  
Clump or erect narrow leaves to 4 ft. tall  
Full sun to partial shade  
Hardy to 25° F

U



*Glottiphyllum oligocarpum*

Native to South Africa  
Short clumps with leaves to 4 in. long  
Full sun to partial shade



WHAT'S IN BLOOM  
Information Key



This plant or a similar variety is available for purchase in our nursery



indicates *diameter*