



Coreopsis gigantea

Native to California
Single-trunked or branching,
to 5 ft. tall
Full sun
Hardy to 25° F



Salvia clevelandii

California native
Shrub to 4 ft. tall
Full sun
Hardy to 15° F



Acacia aphylla

Native to Western Australia
Shrub to 9 ft. tall
Full sun to partial shade
Hardy to 20° F



Aloe ferox

Native to South Africa
Single rosette to 4 ft. 0,
eventually to 12 ft. tall
Full sun
Hardy to mid 20's



Aloe capitata

Native to Madagascar
Stemless rosette with heads
to 3' 0
Full sun
Hardy to 25° F



Agave parrasana x colorata

Hybrid with Mexican
parentage
Stemless rosette to 2½ ft. 0
Full sun to partial shade
Hardy to low 20's F



Grevillea lavandulacea
'Penola'

Native to SE Australia
Shrub to 4-5 ft. tall
Full sun
Hardy to 20° F



Senecio fulgens

Native to South Africa & East
Africa
Clumper with sprawling
stems, to 2 ft. tall
Partial shade
Hardy to 30°



Bulbine latifolia

Native to South Africa
Stemless clumper
Part shade to full sun
Hardy to mid-20's



Aloe marlothii

Native to South Africa
Single head to 8-10 ft. tall
Full sun
Hardy to 27° F



Aloe speciosa

Native to southern South
Africa
Single or branching slowly
develops trunk of up to 12 ft
Full sun
Hardy to upper 20's



Aloe wickensii

Native to NE South Africa
Usually single rosettes
Full sun to part shade
Hardy to mid-20's



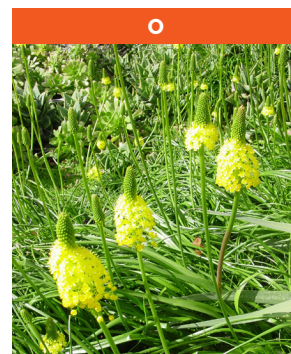
Aloe 'Creamsicle'

Hybrid with S. African
parentage
Shrub to 8 ft.
Full sun to partial shade
Hardy to 25° F



Aloe striata

Native to southern South
Africa
Single or dividing to form a
clump rosettes to 2½ ft.
Full sun
Hardy to mid-20's



Bulbinella nutans

Native to South Africa
Summer-dormant bulb, to 4
ft. in flower
Full sun to partial shade
Hardy to low 20's F



Sedum pachyphyllum

Native to Mexico
Dwarf clumper
Full sun to partial shade
Hardy to low 20's F



Euphorbia bupleurifolia

Native to South Africa
Small succulent to 1 ft. tall
Full sun to partial shade
Hardy to 25° F



Cheiridopsis rostrata

Native to South Africa
Forms small clump to 2 ft. Ø
Full sun
Hardy to mid-20's



Acacia denticulosa

Native to Western Australia
Shrub to 12 ft. tall
Full sun
Hardy to 20° F



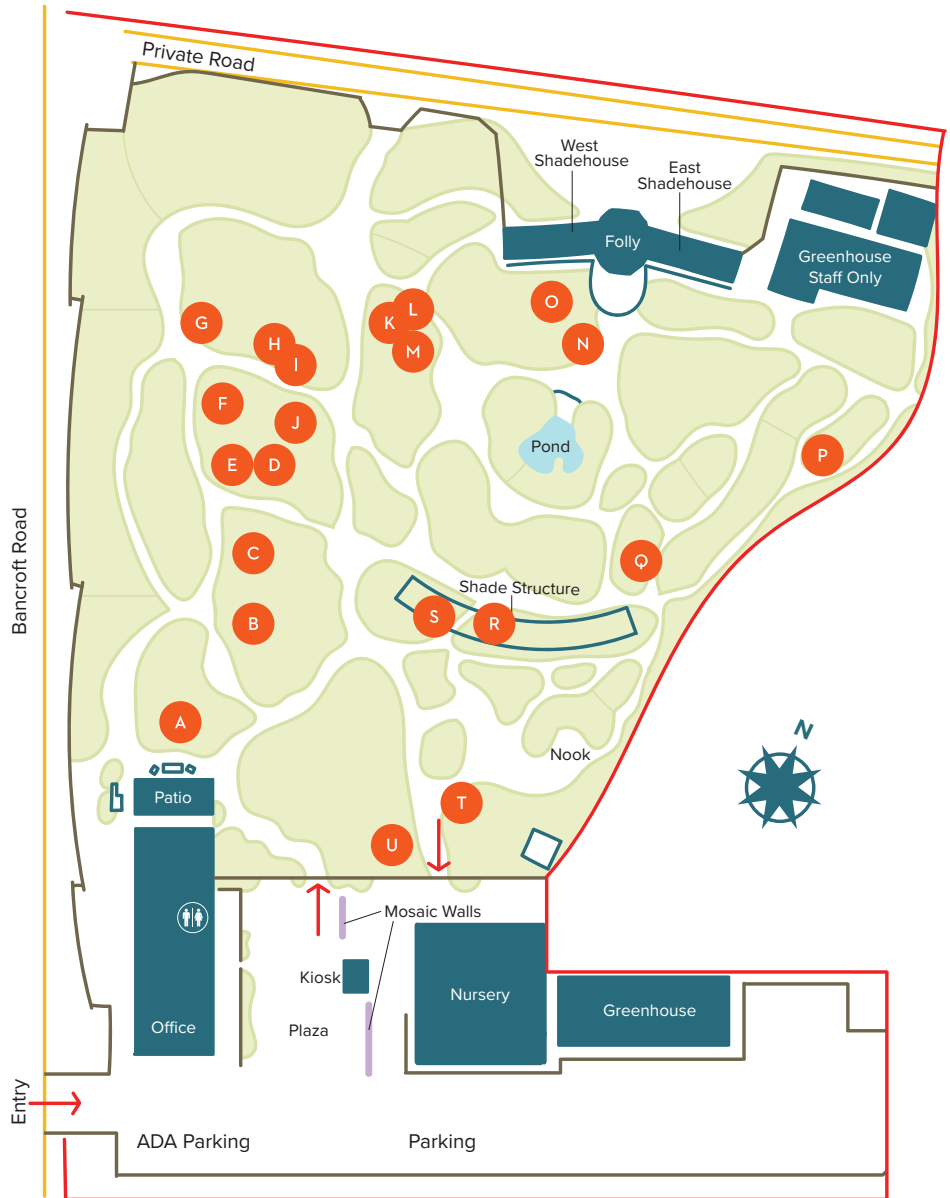
Kalanchoe sexangularis

Native to Madagascar
Forms clump to 2 ft. tall
Partial shade
Hardy to 28° F



Isopogon divergens

Native to Western Australia
Shrub to 6 ft. tall
Full sun to partial shade
Hardy to mid-20's F



WHAT'S IN BLOOM
Information Key



This plant or a similar variety is available for purchase in the Nursery.



This plant was hybridized by Brian Kemble (Curator).



Indicates diameter.