



A

***Yucca rostrata***

Native to northern Mexico & W. Texas  
Tree-like to 15' tall, sparingly branched  
Full sun  
Hardy to 10° F



D

***Hesperoyucca whipplei***

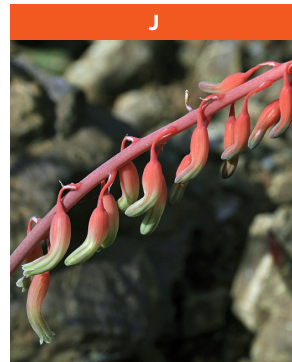
*Our Lord's Candle*  
Native to CA & northern Baja CA  
Stemless rosette, single or clump-forming  
Full sun  
Hardy to teens



G

***Mahonia fremontii***

Native to Western U.S.  
Shrub to 10 ft. tall  
Full sun  
Hardy to below 0° F



J

***Gasteria carinata var. glabra***

Native to South Africa  
Stemless rosette to 8 in. Ø  
Partial shade  
Hardy to 25° F



M

***Dyckia hybrid***

Hybrid with Brazilian parentage  
Clumper with rosettes to 1 ft. Ø  
Full sun to partial shade  
Hardy to mid-20's F



B

***Diplacus 'Eleanor'***

*Sticky Monkey Flower*  
California native  
Shrub to 3 - 4 ft. tall  
Full sun to partial shade  
Hardy to 15° F



E

***Eriogonum crocactum***

California native  
Shrubby perennial to 1½ ft. x 3 ft.  
Full sun  
Hardy to 20° F



H

***Leucospermum reflexum***

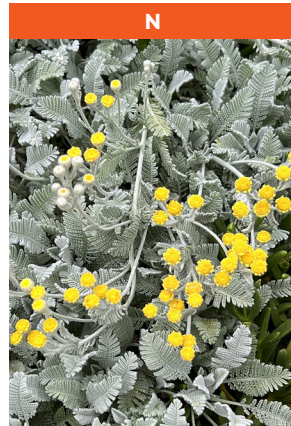
Native to South Africa  
Shrub to 10-12 ft. tall  
Full sun  
Hardy to 25° F



K

***Scabiosa ochroleuca***

Native to South Africa  
Multi-stemmed, to 2 ft. tall  
Full sun to partial shade  
Hardy to mid-20's F



N

***Tanacetum haradjanii***

Native to Syria  
Mat-forming, to 8 in. tall  
Full sun  
Hardy to 15° F



C

***Salvia apiana***

Native to California  
Shrub to 5 ft. tall  
Full sun  
Hardy to low 20's F



F

***Salvia clevelandii (blue & white form)***

California native  
Shrub to 4 ft. tall  
Full sun  
Hardy to 15° F



I

***Albuca nelsonii***

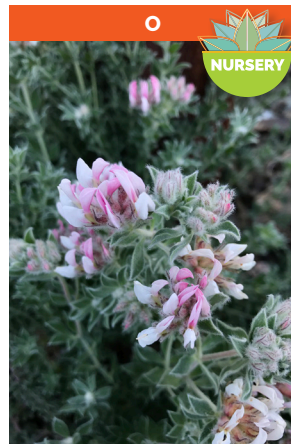
Native to South Africa  
Clump-forming, to 3-4' tall  
Partial shade  
Hardy to mid-20's



L

***Puya alpestris***

Native to central Chile  
Clumper to 3 ft. tall, flowers to 5 ft.  
Full sun  
Hardy to low 20's F



O

***Dorycnium hirsutum***

Native to Portugal  
Shrub to 2 feet tall  
Full sun  
Hardy to 15° F





P



*Yucca filifera*

Native to Mexico  
Tree-like to 25 ft. tall  
Full sun to partial shade  
Hardy to 20° F

S



*Agave mitis*

(*Agave celsii*)  
Native to eastern Mexico  
Rosettes to 2' across, eventually forming a large clump  
Full sun to part shade  
Hardy to mid-20's

Q



*Nolina matapensis*

Native to NW Mexico  
Grass-like heads to 8 ft.  $\theta$ ; trunk to 15 ft.  
Full sun to partial shade  
Hardy to 15° F

T



*Romneya coulteri*

*Matilija Poppy*  
Native to California  
Perennial to 4-5 ft. x 8 ft. wide  
Full sun to partial shade  
Hardy to 10° F

R



*Opuntia leucotricha*

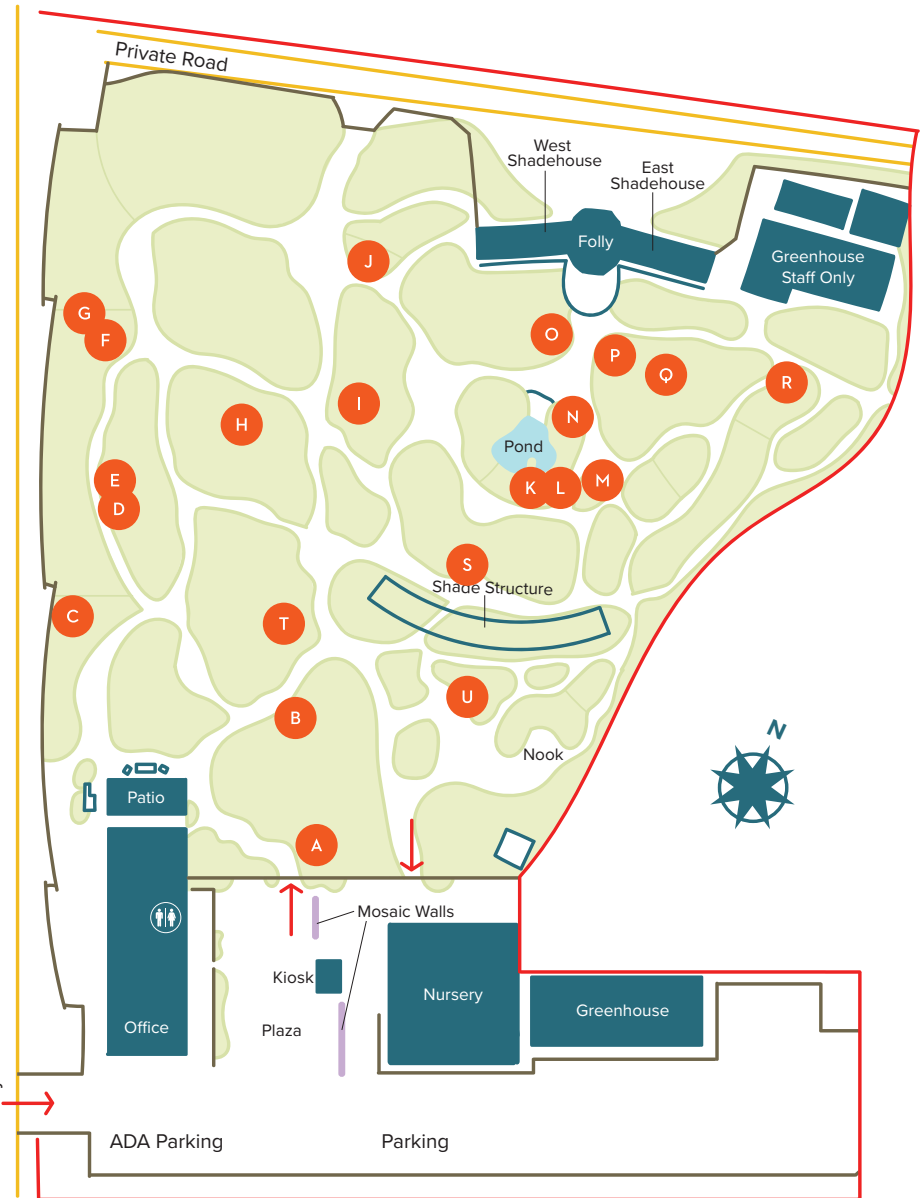
Native to central Mexico  
Tree-like growth to 12' tall  
Full sun  
Hardy to 20° F

U



*Gasteria polita*

Native to South Africa  
Stemless rosette to 12-14 in.  $\theta$   
Partial shade  
Hardy to 27° F



Version 2

WHAT'S IN BLOOM  
Information Key



This plant or a similar variety is available for purchase in the Nursery.



This plant was hybridized by Brian Kemble (Curator).



Indicates diameter.