



**A**  
*Lachenalia viridiflora*  
Native to South Africa  
Bulb to 6 in. tall  
Full sun to part shade  
Hardy to low 20's F



**D**  
*Arctostaphylos refugioensis*  
California native  
Shrub to 6 ft. or more  
Full sun to partial shade  
Hardy to 20° F



**G**  
*Aloe 'Tangerine'*  
Hybrid; parents native to S. Africa  
Multi-stemmed, to 8 ft. tall  
Sun to part shade  
Hardy to 24° F



**J**  
*Guichenotia macrantha*  
Native to Australia  
Shrub to 5 ft. tall  
Full sun to part shade  
Hardy to mid-20's F



**M**  
*Aloe microstigma*  
Native to South Africa  
Single stemless or short-stemmed rosette to 1½ ft.  
Full sun  
Hardy to low 20's



**B**  
*Eriocephalus africanus*  
Native to South Africa  
Shrub to 3 ft.  
Full sun to partial shade  
Hardy to 25° F



**E**  
*Agave parrasana* \* parryi  
Hybrid, parents from Mexico  
Rosette to 3½ ft. Ø  
Full sun to partial shade  
Hardy to below 20° F



**H**  
*Othonna capensis*  
Native to SW South Africa  
Ground cover  
Full sun to part shade  
Hardy to low 20's F



**K**  
*Aloe 'Creamsicle'*  
Hybrid with S. African parentage  
Shrub to 8 ft.  
Full sun to partial shade  
Hardy to 25° F



**N**  
*Agave striata*  
Native to Mexico  
Clumping, with heads to 2 ft. Ø  
Full sun to partial shade  
Hardy to 20° F



**C**  
*Aloe ferox*  
Native to South Africa  
Single rosette to 4 ft. Ø, eventually to 12 ft. tall  
Full sun  
Hardy to mid 20's



**F**  
*Aloe marlothii*  
Native to South Africa  
Single head to 8-10 ft. tall  
Full sun  
Hardy to 27°F



**I**  
*Banksia ashbyi*  
Native to Western Australia  
Shrub to 12 ft. tall  
Full sun  
Hardy to 22° F



**L**  
*Aloe mutabilis*  
Native to South Africa  
Clump to 3 ft. tall  
Full sun to partial shade  
Hardy to low 20's



**O**  
*Opuntia tomentosa* (fruit)  
Tree-like prickly pear  
Native to Mexico  
Full sun  
Hardy to mid-20's F



P



*Deuterocohnia brevifolia*

(syn. *Abromeitiella brevifolia*)  
Native to Argentina & Bolivia  
Mound of tiny heads to 3 ft. tall  
Sun or part shade  
Hardy to 20° F

S



*Kalanchoe sexangularis*

Native to South Africa  
Shrub to 3 ft tall  
Partial shade  
Hardy to 25° F

Q



*Aloe rivierei*

Native to Yemen  
Clump-forming, to 5-6 ft. tall  
Full sun to mostly sunny  
Hardy to upper 20's F

T



*Aloe pluridens*

Native to South Africa  
Clumping, with stems to 10 ft. tall  
Full sun to partial shade  
Hardy to 25° F

R



*Echeveria 'Lace'*

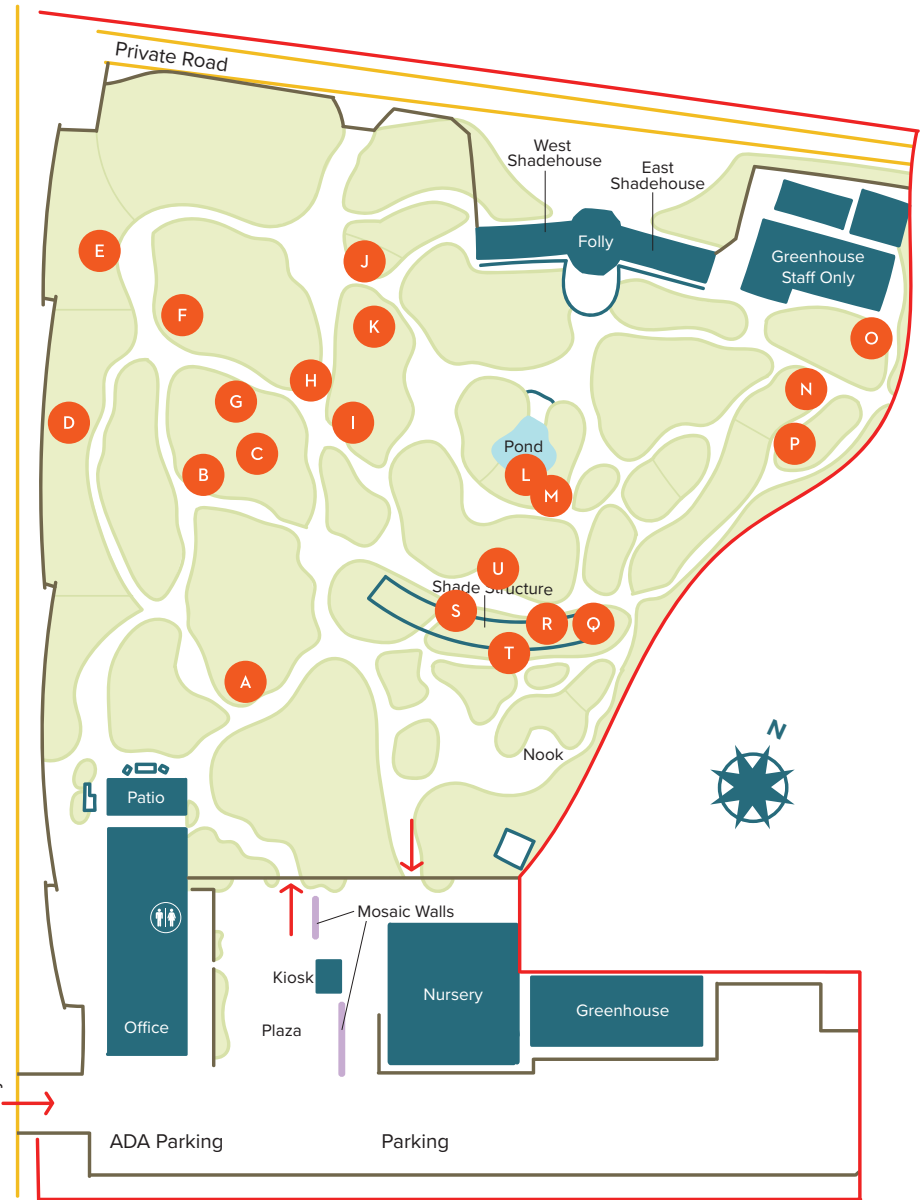
Hybrid with Mexican parentage  
Single with short stem; heads 1 ft Ø  
Partial shade  
Hardy to 30° F

U



*Chamelaucium cv.*

Hybrid; parents from Australia  
Shrub to 5 ft. tall  
Full sun  
Hardy to 25° F



WHAT'S IN BLOOM  
Information Key



This plant or a similar variety is available for purchase in the Nursery.



This plant was hybridized by Brian Kemble (Curator).



Indicates diameter.