



Trichostema 'Midnight Magic'

Hybrid; parents from CA & Mexico
Shrub to 4 ft. tall
Full sun to light shade
Hardy to 25° F



Arcrostaphylos edmundsii 'Big Sur'

CA native
Shrub to 3 ft. tall
Full sun to part shade
Hardy to 10° F



Euphorbia rigida

Native to Mediterranean basin
Perennial to 15 in. tall
Full sun
Hardy to below 20° F



Banksia nobilis

(*Dryandra nobilis*)
Native to Australia
Shrub to 6-10 ft. tall
Full sun to partial shade
Hardy to low 20's F



Aloe ferox

Native to South Africa
Single rosette to 4 ft. θ , eventually to 12 ft. tall
Full sun
Hardy to mid 20's F



Mahonia harrisoniana

Native to Arizona & California
Shrub to 5 ft. tall
Full sun to partial shade
Hardy to mid-20's F



Templetonia retusa

Native to western Australia
Shrub to 6 ft. tall
Full sun to partial shade
Hardy to 22° F



Guichenotia macrantha

Native to Australia
Shrub to 5 ft. tall
Full sun to partial shade
Hardy to mid-20's F



Aloe microstigma

Native to South Africa
Single stemless or short-stemmed rosette to 1½ ft.
Full sun
Hardy to low 20's F



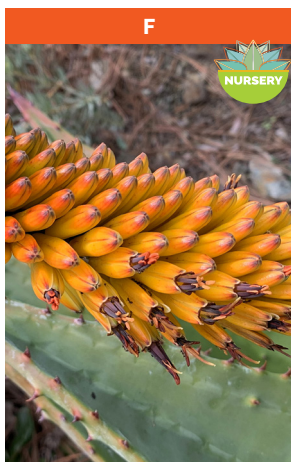
Cephalophyllum diversiphyllum

Native to southwestern South Africa
Small clump of cylindrical leaves
Full sun to part shade
Hardy to low 20's F



Eriocephalus africanus

Native to South Africa
Shrub to 3 ft.
Full sun to partial shade
Hardy to 25° F



Aloe marlothii

Native to South Africa
Single head to 8-10 ft. tall
Full sun
Hardy to 27° F



Aloe 'Creamsicle'

Hybrid with South African parentage
Shrub to 8 ft.
Full sun to partial shade
Hardy to 25° F



Aloe reitzii hybrid

Hybrid with South African parentage
Stemless rosette to 8 in. θ
Full sun to partial shade
Hardy to mid-20's F



Eriogonum crocatum

California native
Shrubby perennial to 1½ ft. x 3 ft.
Full sun
Hardy to 20° F



P



Aloe rivierei

Native to Yemen
Clump-forming, to 5-6 ft. tall
Full sun to mostly sunny
Hardy to upper 20's F

S



Aloe pluridens

Native to South Africa
Clumping, with stems to 10 ft. tall
Full sun to partial shade
Hardy to 25° F

Q



Aloe capitata var. capitata

Native to Madagascar
Stemless rosette with heads to 3' Ø
Full sun
Hardy to 25° F

T



Banksia fraseri

(*Dryandra fraseri*)
Small shrub to 2 ft. tall
Full sun to partial shade
Hardy to low 20's F

R



Aeonium arboreum var. atropurpureum hybrid

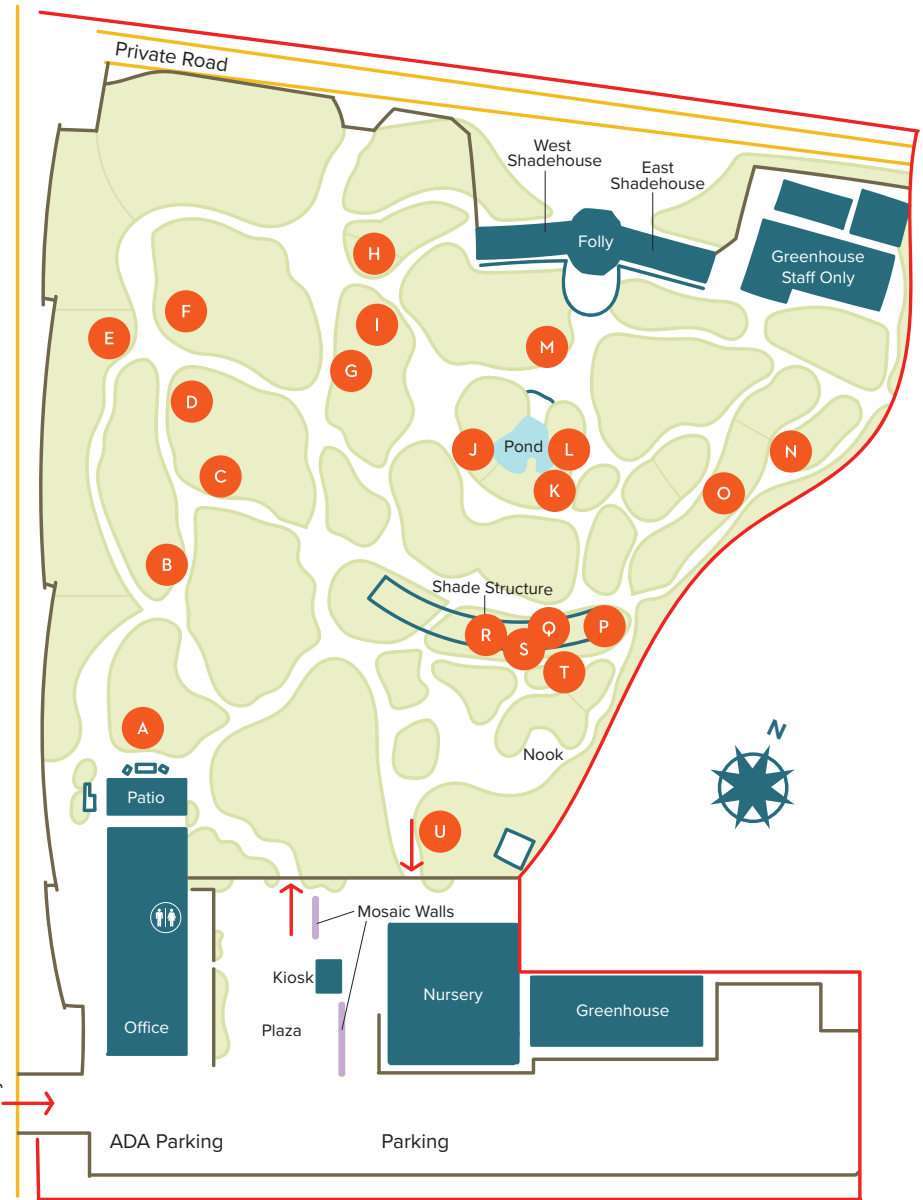
Hybrid; parents native to the Canary Islands
Clump of stems to 5 ft. tall
Full sun on coast; partial shade inland
Hardy to upper 20's F F

U



Marlothistella stenophylla

Native to South Africa
Clumping ground cover
Full sun
Hardy to 25° F



Scan the code to learn how you can support the Garden with a membership.



WHAT'S IN BLOOM
Information Key



This plant or a similar variety is available for purchase in the Nursery.



This plant was hybridized by Brian Kemble (Curator).



Indicates diameter.