



Salvia 'John Whittlesey'

Hybrid; parents native to Mexico
Perennial to 3 ft. tall
Full sun to partial shade
Hardy to 5° F



Aloe rubroviolacea

Native to Yemen & Saudi Arabia
Clumping; heads to 3 ft. Ø
Full sun
Hardy to low 20's



Arctostaphylos refugioensis

California native
Shrub to 6 ft. or more
Full sun to partial shade
Hardy to 20° F



Aloe dyeri

Native to South Africa
Solitary stemless rosette to 6 ft. Ø
Partial shade
Hardy to 25° F



Chamelaucium 'Matilda'

Hybrid with Australian parentage
Shrub to 3 ft. tall
Full sun
Hardy to 27° F



Lachenelia punctata

Native to South Africa
Bulb to 10 in. tall (in flower)
Full sun
Hardy to low 20's F



Aloe arborescens (yellow)

Native to South Africa
Shrub to 8 ft.
Full sun to partial shade
Hardy to low 20's



Othonna capensis

Native to SW South Africa
Ground cover
Full sun to part shade
Hardy to low 20's F



Puya ferruginea

Native to the Ecuador, Peru, Bolivia
Clumping; stemless rosettes to 1½ ft. Ø
Full sun
Hardy to upper 20's F



Agave striata

Native to Mexico
Clumping, with heads to 2 ft. Ø
Full sun to partial shade
Hardy to 20° F



Hakea petiolaris

Native to Western Australia
Upright shrub to 10 – 16 ft. tall
Full sun
Hardy to low 20's F



Heteromeles arbutifolia (fruit)

(Toyon)
California Native
Shrub or small tree to 20 ft.
Full sun to partial shade
Hardy to 10° F



Aloe schelpei

Native to Ethiopia
Stemless clumper; heads to 1½ ft. Ø
Full sun to partial shade
Hardy to low 20's



Aloe cheranganiensis

Native to Kenya
Shrub to 3-4 ft. tall
Full sun to partial shade
Hardy to 28° F



Eriogonum crocatum

California native
Shrubby perennial to 1½ ft. x 3 ft.
Full sun
Hardy to 20° F



P



***Aloe laeta* hybrid**

Hybrid with Madagascar parentage
Stemless rosettes to 1 ft. Ø
Partial shade
Hardy to 30° F

S



Aloe humilis x africana

Hybrid; parents from S. Africa
Stemless clumper; rosettes to 8" Ø
Full sun to part shade
Hardy to 25° F

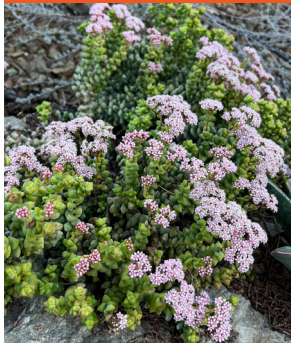
Q



Crassula sarcocaulis

Native to SE Africa
Shrub to 3 ft. high
Full sun to partial shade
Hardy to 20° F

T



***Crassula rupestris*
(dwarf pink)**

Native to South Africa
Clump-forming, to 6 in. tall
Full sun to partial shade
Hardy to 28° F

R



***Mangave 'Snow Leopard'**

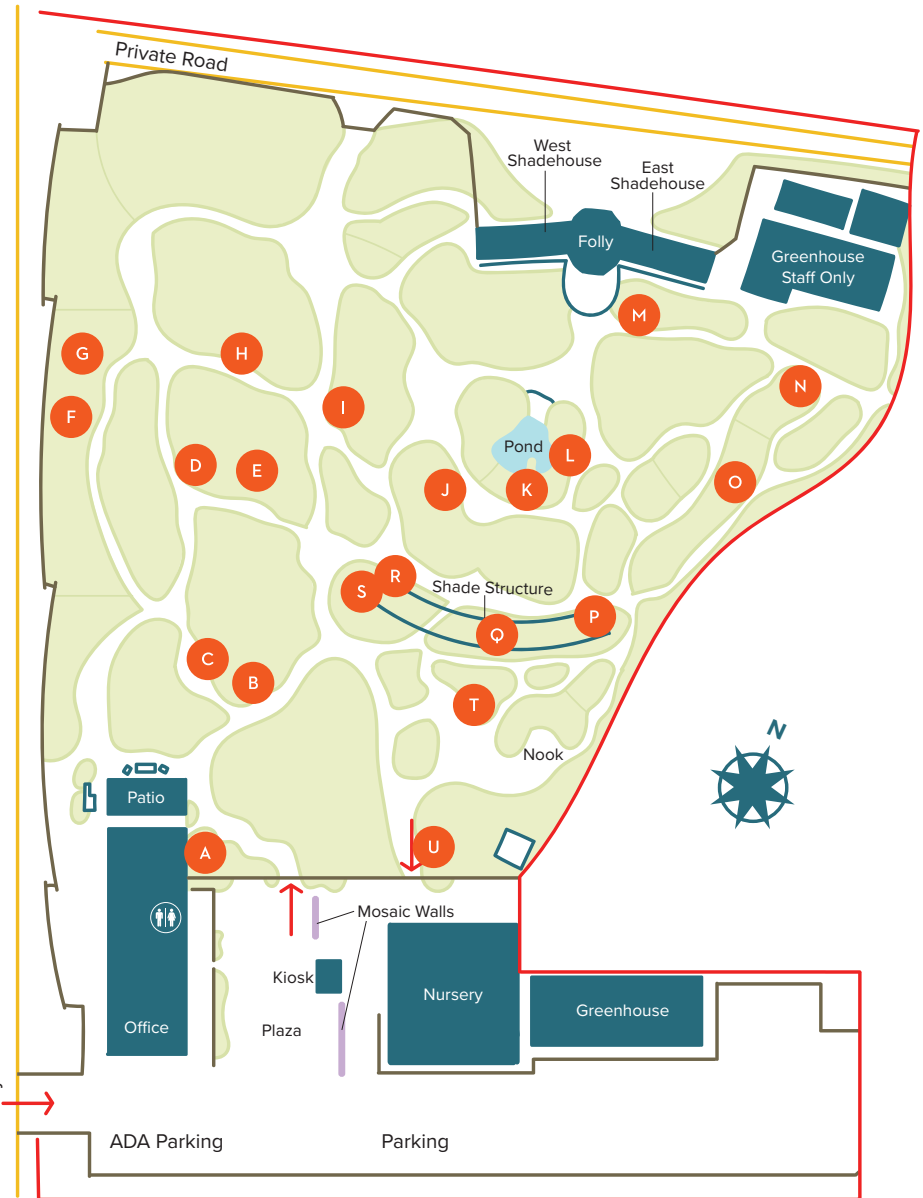
Hybrid with Mexican parentage
Stemless rosette to 2½ft. Ø
Full sun to partial shade
Hardy to 25° F

U



Glottiphyllum linguiforme

Forms clump to 1½ ft. Ø
Native to South Africa
Full sun to partial shade
Hardy to upper 20's



Scan the code to learn how you can support the Garden with a membership.



WHAT'S IN BLOOM
Information Key



This plant or a similar variety is available for purchase in the Nursery.



This plant was hybridized by Brian Kemble (Curator).



Indicates diameter.